

**What will we be learning?**

- We will learn:
- About tooth decay.
- The different types of teeth in humans.
- The parts of the digestive system and describe their functions.
- To describe the digestive process.
- About different food chains.
- About different animal teeth.

**Key Facts**

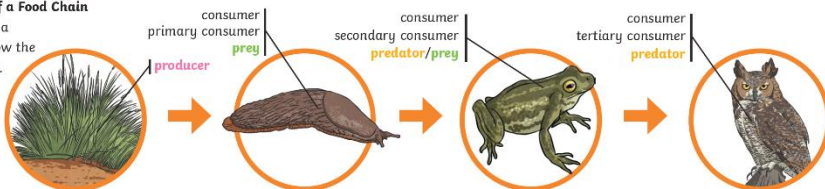
The teeth of an animal are designed to eat different foods depending on the diet of the animal. Some people have wisdom teeth but they have no function now. The part of a tooth that you can see and is not covered by the gum, is called the crown. The root is hidden by the gum. There are 4 main layers that make up the structure of a tooth. Enamel, Dentine, Pulp and Cementum.

**Key vocabulary**

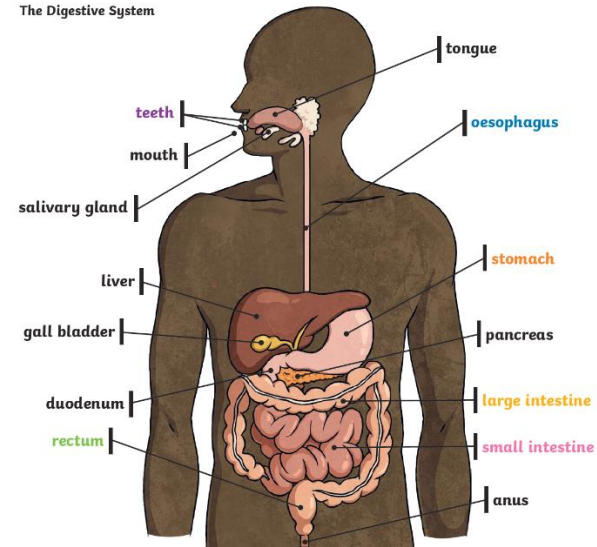
- Digest: Break down food so it can be used by the body.
- Oesophagus: A muscular tube which moves food from the mouth to the stomach.
- Stomach: An organ in the digestive system where food is broken down with stomach acid and by being churned around.
- small intestine: Part of the intestine where nutrients are absorbed into the body.
- large intestine: Part of the intestine where water is absorbed from remaining waste food. Faeces are formed in the large intestine.
- Rectum: Part of the digestive system where faeces are stored before leaving the body through the anus.
- Teeth: Hard structures in the mouth that help with biting and chewing food.
- Herbivore: An animal that eats plants.
- Carnivore: An animal that feeds on other animals.
- Omnivore: An animal that eats plants and animals.
- Producer: An organism, such as a plant, that produces its own food.
- Predator: An animal that hunts and eats other animals.
- Prey: An animal that gets hunted and eaten by another animal.

**An Example of a Food Chain**

The arrows in a food chain show the flow of energy.



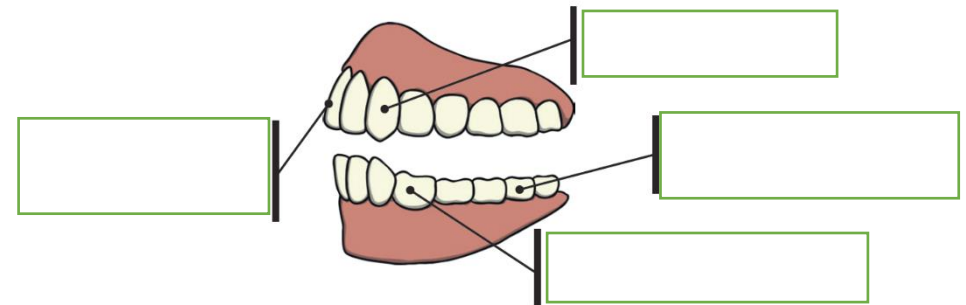
The Digestive System



**Questions:**

1. How many types of teeth do humans have?
2. A human is a producer, predator or prey?
3. Label the types of teeth below.

**Human Teeth and Their Functions**



**What I have learnt.**